



---

Interministry  
Community Development Initiative

Ontario East Municipal Conference

# Municipal Economic Development



Ontario's communities are essential to the province's overall economic health.

They can be the points of first contact for potential investors, and key players in helping to support and expand local businesses.

In addition, local decision-makers, including municipal leaders, determine their community's quality of place, quality of life and economic strategies.

# Current Municipal Challenges

diversification  
supply uncertainty  
climate change  
competition  
growth management  
economic development  
increased demand for service  
youth out - migration  
economic uncertainty  
infrastructure renewal  
energy prices  
cautious recovery  
aging population  
severe weather

# Interministry Community Development Initiative

## ICDI:

- Brings together representatives from a number of provincial ministries;
- Provides timely and coordinated provincial expertise;
- Uses existing information and resources more efficiently;




# Interministry Community Development Initiative

Collaboration leads to a shared vision for community development through:

- Improved provincial information sharing and coordinated efforts.
- Improved provincial responses and client service.
- Integration and optimization of provincial resources.
- Longer-term positioning and transformation (Readiness).

**A SHARED VISION**



Inter-Ministerial  
Community Development Initiative

**T**o improve inter-ministerial collaboration and information sharing

**T**o implement a more effective and coordinated response to optimize provincial resources

**T**o re-position and transform to the new economy

# ***Provincial Economic Transformation Teams (PETTs)***

These teams, each assigned to a region of Ontario, are called Provincial Economic Transformation Teams (PETTs) or Northern Economic Transformation Teams (NETTs) in Northern Ontario.

The five multi-ministry teams:

- Provide coordinated provincial support to communities facing economic challenges.
- Support those with an economic opportunity requiring assistance from several ministries.



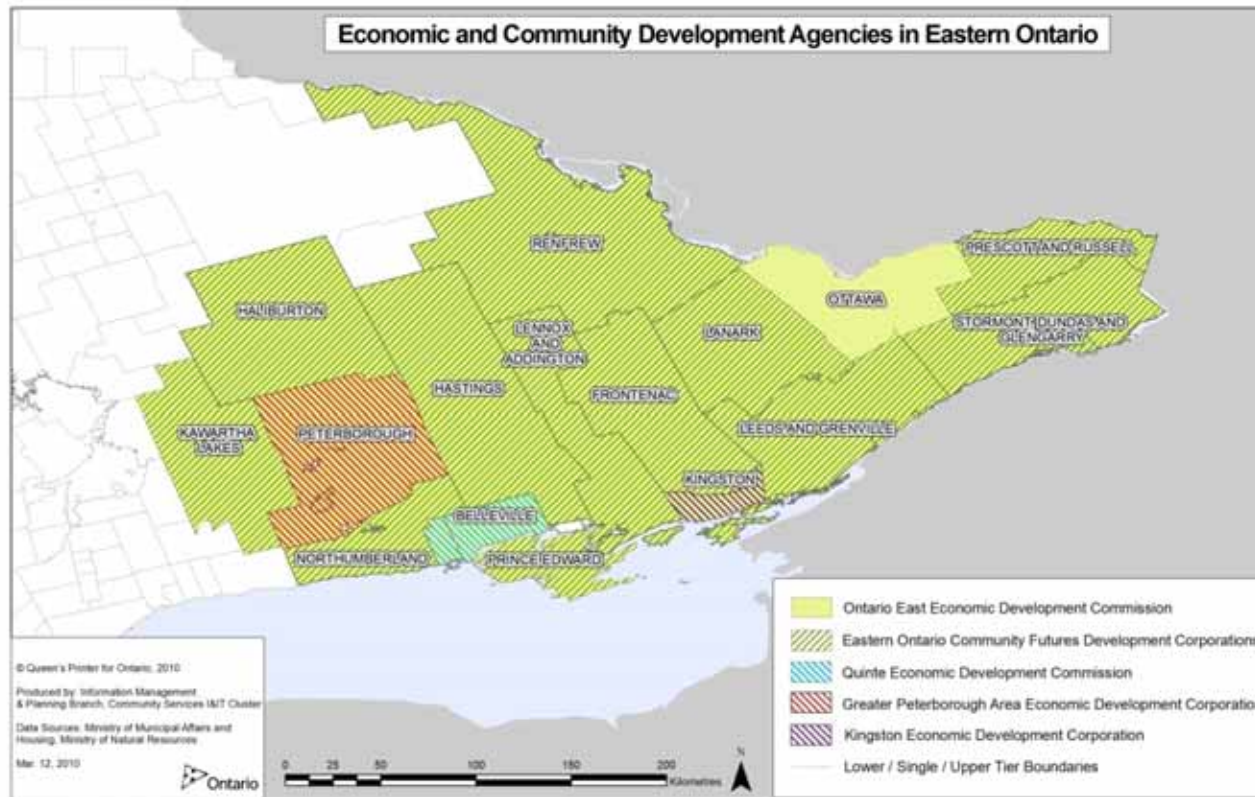
# Contact Your PETT

The Eastern Region PETT is here to help if:

- the need exists to collectively “jump start” an economic initiative;
- an opportunity arises that is of a regional significance;
- the consensus prevails regionally that the combined efforts of many ministries is deemed beneficial to the success of an undertaking.



# Eastern Region PETT Recognises Local Economic Development Agencies



# Introducing the Ontario Municipal Program Guide

The Ontario Municipal Program Guide is a free online directory:

- It lists programs and services related to economic development for municipalities provided by Ministries from across the Ontario government
- The guide enables municipalities to use one site to find detailed information on provincial programs and services
- Provides direct access to online resources and contact information for ministry staff in their regions.

[Ontario.ca/MunicipalPrograms](http://Ontario.ca/MunicipalPrograms)

# MMAH Municipal Services Offices

Municipal Services Office East  
Rockwood House  
8 Estate Lane  
Kingston ON, K7M 9A8  
Toll Free: 1-800-267-9438

Northwestern Municipal Services Office  
Suit 223  
435 James St. S  
Thunder Bay ON P7E 6S7  
Toll Free: 1-800-465-5027

Municipal Services Office Central  
2nd Flr 777 Bay St  
Toronto ON, M5G 2E5  
Toll Free: 1-800-668-0230

Northeastern Municipal Services Office  
Suite 401  
159 Cedar St.  
Sudbury ON, P3E 6A5  
Toll Free: 1-800-461-1193

Municipal Services Office  
Western  
2nd Floor  
659 Exeter Rd  
London ON, N6E 1L3  
Toll Free: 1-800-265-4736

