



TPO Inside/Outside Corner

Firestone Item Number: W56TPO3011 (White)
W56TPOG011 (Grey)
W56TPOT011 (Tan)

DESCRIPTION:

Firestone TPO Inside/Outside Corners are made from a flexible non-reinforced thermoplastic polyolefin membrane and are specifically designed to be used in roofing applications for flashing inside and outside corners on curbs, parapets and scuppers. They may also be used as a square tube flashing, up to five inches square, by using four outside corners. TPO Inside/Outside Corners come pre-cut into individual corners for ease of application.

PREPARATION OF SUBSTRATES:

Prepare TPO Inside/Outside Corner areas by removing all dirt and debris from the membrane surface, cleaning the surface area of the field sheet and the inside and outside corners with Firestone Splice Wash prior to installation of the TPO Inside/Outside Corner.

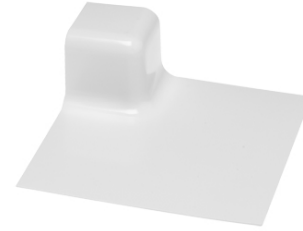
METHOD OF APPLICATION:

Round off all corners prior to heat welding into place per current Firestone UltraPly TPO Specifications. Care should be given during the heat welding process in order to prevent heat build up that could burn or damage the TPO molded corner.

PRODUCT DATA:

Overall Size: 9" x 9"
Corner Size: 3" x 3" x 3.25" (76.2 mm x 76 mm x 82.5 mm) with .5" (12.7 mm) radius on all edges of the raised corner
Thickness: 0.045" (1.14 mm) min

This sheet is meant only to highlight Firestone's products and specifications. Information is subject to change without notice. Firestone takes responsibility for furnishing quality materials, which meet Firestone's published product specification. As neither Firestone itself nor its representatives practice architecture, Firestone offers no opinion on, and expressly disclaims any responsibility for the soundness of any structure on which its products may be applied. If questions arise as to the soundness of a structure, or its ability to support a planned installation properly, the Owner should obtain opinions of competent structural engineers before proceeding. Firestone accepts no liability for any structural failure or for resultant damages, and no Firestone Representative is authorized to vary this disclaimer.



PRODUCT DATA

PACKAGING:

Firestone TPO Inside/Outside Corners are packaged with 20 pre-cut corners per carton.

PHYSICAL PROPERTIES:

Membrane Thickness:	ASTM D-638	.045 +/-10% min
Tensile Strength:	ASTM D-638	1780 psi (12.3 MPa)
Elongation at Break:	ASTM D-638	750% min
Tear Resistance:	ASTM D-1004 (Die C)	11 lbf (49 N)
Brittleness Point:	ASTM D-2137	-40° F (-40° C) min

Properties After Heat Aging (166 hours at 240° F)

Tensile Strength:	ASTM D-638	1850 psi (12.8 MPa)
Elongation at Break:	ASTM D-638	650% min
Tear Resistance:	ASTM D-1004 (Die C)	9 lbf (40 N)

STORAGE:

Store material in its original unopened packaging away from sources of physical damage or chemical contamination.

PRECAUTIONS:

Exercise caution when lifting, moving, transporting, storing or handling Firestone TPO Inside/Outside Corners to avoid sources of punctures, physical damage or chemical contamination. Contact Firestone Roofing Solutions Department for specific recommendations regarding chemical or waste product compatibility with Firestone TPO Inside/Outside Corners.

LEED INFORMATION:

Post Consumer Recycled Content: 0%
Post Industrial Recycled Content: 0%
Manufacturing Location: Wellford, SC

Firestone Building Products Company
A Division of BFS Diversified Products, LLC
310 E. 96th Street, Indianapolis, IN 46240
Sales: (800) 428-4442 • Technical (800) 428-4511
www.firestonebpcco.com