

# EVERFLASH 40

## Description

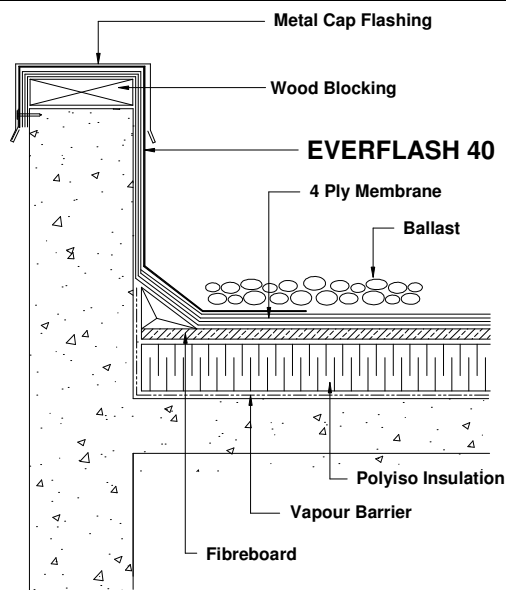
EverFlash 40 flashing membrane consists of two plies of thermoplastic film integrally laminated to a fiberglass reinforcing scrim. EverFlash 40 provides a flexible, durable and long lasting solution for modified bitumen and built-up roofing details.

## Features

- ✓ Excellent chemical resistance.
- ✓ Flexible, easily conforms to substrate
- ✓ Heat welded seams provide trouble free performance
- ✓ Durable, high puncture resistance
- ✓ Ease of handling and installation

## Uses

EverFlash 40 is used as the cap flashing membrane in modified bitumen and built-up roofing systems. It may be used to flash rooftop curbs, parapet walls, membrane dividers, skylights, gutters and expansion/construction joints. EverFlash 40 is adhered to the substrate in a smooth, continuous and uniform coat of Type III asphalt.



## Typical Physical Properties Table

Physical Properties	ASTM Test Method	EverFlash 40 Results
<b>Colour</b>	n/a	Black
<b>Roll Width</b>	n/a	6.56' (2m)
<b>Roll Length</b>	n/a	100' (30.48m)
<b>Membrane Thickness</b>	D 638	0.040 (1 mm)
<b>Tensile Strength, min.psi (Mpa)</b>	D 638	1600 (11.1)
<b>Elongation at Break, min.</b>	D 638	270% MD 250% CMD
<b>Seam Strength, min. % of tensile Strength</b>	D 638	80
<b>Retention of Properties After Heat Aging</b>	D 3045	--
Tensile Strength, min. (% of original)	D 638	95
Elongation, min (% of original)	D 638	90
<b>Tearing Resistance, min. lbf (N)</b>	D 1004	14 (63.0)
<b>Low Temperature Bend , -40F, -40C</b>	D 2136	Pass
<b>Accelerated Weathering Test (Xenon Arc)</b>	D 2565	10,000 hours
Cracking ( 7X Magnification)		None
Discolouration ( by observation )		Negligible
Crazing ( 7X Magnification)		None
<b>Linear Dimensional Change</b>	D 1204	0.02%
<b>Weight Change after Immersion in Water</b>	D 570	25%
<b>Static Puncture Resistance, 33 lbf (15kg)</b>	D 5602	Pass
<b>Dynamic Puncture Resistance, 7.3 lbf (10 J)</b>	D 5635	Pass

## Application Procedures

Substrates shall be smooth, clean and dry. Clean metal, masonry or old surfaces shall be primed with asphalt primer. Apply Type III roofing asphalt in a smooth, continuous and uniform coat over substrate to be flashed. EverFlash 40 Flashing Membrane should extend 6" (150mm) onto the horizontal roof surface.

Roll EverFlash 40 gently with a broom or roller ensuring no air pockets or voids. Once the membrane has cooled, heat weld the seams with a hot air gun and silicone roller. Probe seams when cool to ensure a complete bond. EverFlash 40 should not be installed with cold adhesives.